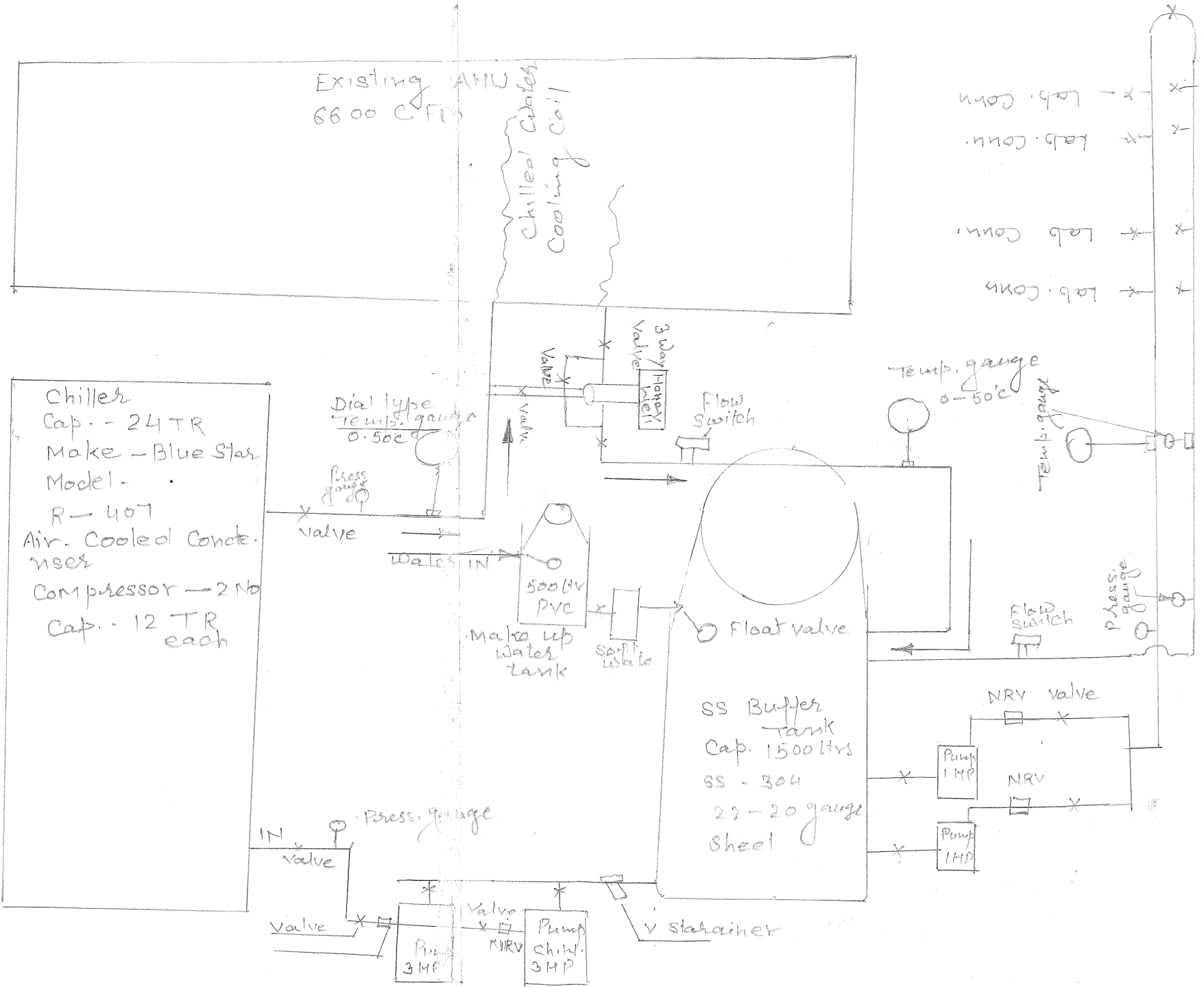


Proposed

Modified Indirect Cooling system (Conversion from direct to Indirect Cooling system)

In proposed scheme, following is envisaged:

- (a) Remove outdoor (direct cooling) with 24TR (already at site) Chiller.
- (b) Remove all frusted Chilled water Cooling Coil
- (c) From 24TR Chiller MS line shall be laid upto existing AHU to feed Chilled water.
- (d) From 24TR Chiller, SS Piping shall be laid to feed chill water to Lab equipments.
- (e) In the scheme, make up tank, Temp gauge, Flow switch, 3 way valve, strainer have been considered.
- (f) Two 3HP pump shall be ~~not~~ installed to pump chill water.



Am
2/8/200